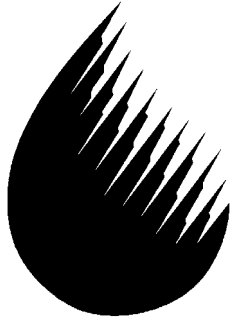


# Xeriscape Conversion Study



SOUTHERN NEVADA  
WATER AUTHORITY

## Final Report

2005

By

Kent A. Sovocool  
Senior Conservation Programs Analyst  
Southern Nevada Water Authority

With data processing assistance from

Mitchell Morgan  
Assistant Management Analyst  
Southern Nevada Water Authority

Funded in part by a grant from  
Bureau of Reclamation  
U.S. Department of Interior

### SNWA Member Agencies

- *Big Bend Water*
- *City of Boulder City*
- *City of Las Vegas*
- *City of Henderson*
- *City of North Las Vegas*
- *Clark County Water Reclamation District*
- *Las Vegas Valley Water District*

## Table of Contents

TABLE OF TABLES.....	ii
TABLE OF FIGURES.....	iii
ABSTRACT.....	4
ACKNOWLEDGEMENTS.....	6
INTRODUCTION AND BACKGROUND.....	7
<i>XERISCAPE AND WHAT IT MAY MEAN FOR WATER CONSERVATION</i> .....	7
<i>NEVADA’S COLORADO RIVER RESOURCES AND THE SPECIAL IMPORTANCE OF OUTDOOR WATER</i> .....	8
<i>CONSERVATION</i> .....	8
<i>THE RESEARCH STUDY</i> .....	10
METHODOLOGY.....	11
<i>STUDY GROUPS AND MONITORING</i> .....	11
<i>GENERAL DATA METHODS, STRATEGIES, AND STATISTICS</i> .....	13
<i>PRE/POST ANALYSES</i> .....	13
<i>ANALYSES OF SAVINGS OVER TIME AND SEASONS</i> .....	14
<i>COMPARATIVE PER-UNIT AREA IRRIGATION ANALYSES</i> .....	18
<i>MULTIVARIATE ANALYSES TO IDENTIFY SIGNIFICANT SOURCES OF VARIABILITY</i> .....	20
<i>ECONOMIC ANALYSES</i> .....	21
RESULTS AND DISCUSSION.....	22
<i>REDUCTION IN TOTAL HOUSEHOLD WATER CONSUMPTION FOLLOWING CONVERSION</i> .....	22
<i>TO XERISCAPE</i> .....	22
<i>ASSESSMENT OF SAVINGS POTENTIAL ACROSS TIME AND SEASONS</i> .....	24
<i>COMPARISON OF PER UNIT AREA WATER APPLICATION BETWEEN TURFGRASS AND</i> .....	30
<i>XERIC LANDSCAPE</i> .....	30
Annual application.....	30
Monthly Application.....	32
<i>SOURCES OF SIGNIFICANT VARIABILITY IN SINGLE-FAMILY RESIDENTIAL</i> .....	40
<i>CONSUMPTION</i> .....	40
Variability in Annual Residential Consumption.....	41
Variability in Annual Consumption for Irrigation of Monitored Xeric Landscape.....	46
<i>FINANCIAL SAVINGS ASSOCIATED WITH CONVERSION PROJECTS AND COST EFFICIENCY</i> .....	50
<i>ESTIMATED APPROPRIATE LEVEL OF FINANCIAL INCENTIVE</i> .....	54
Homeowner Perspective.....	54
SNWA Perspective.....	58
EXECUTIVE SUMMARY AND CONCLUSIONS.....	60
REFERENCES.....	64
APPENDICES.....	66
<i>Appendix 1: Attachment A (Scope of Work) for BOR</i> .....	67
<i>Agreement 5-FC-30-00440 as Revised 11/19/98</i> .....	67
<i>Appendix 2: Multivariate Model Details</i> .....	73

<i>Appendix 3: Raw Data</i> .....	74
<i>Appendix 4: Information on Single-Family Residential Water Bill Model</i> .....	93
<i>Appendix 5: Information on Homeowner Perspective Model</i> .....	94
<i>Appendix 6: Information on SNWA’s Water Smart Landscapes Program</i> .....	96

## **Table of Tables**

TABLE 1: Planned Pre-/Post-Retrofit Analyses for XS Group.....	14
TABLE 2: Planned Pre-/Post-Retrofit Analyses for TS Group.....	14
TABLE 3: Planned Post-Retrofit Analyses for XS Group Across Time.....	15
TABLE 4: Planned Post-Retrofit Analyses for TS Group Across Time.....	15
TABLE 5: Enhanced Post-Retrofit Analyses for XS Group Across Time.....	16
TABLE 6: Enhanced Post-Retrofit Analyses for TS Group Across Time.....	16
TABLE 7: Planned Summer Post-Retrofit Analyses for XS Group.....	17
TABLE 8: Planned Summer Post-Retrofit Analyses for TS Group.....	18
TABLE 9: Planned Comparative Analysis of Turf and Xeric Per Unit.....	19
TABLE 10: Planned Comparative Analysis of Turf and Xeric Per Unit.....	19
TABLE 11: Pre-/Post-Retrofit Analyses for XS Group.....	22
TABLE 12: Pre-/Post-Retrofit Analyses for TS Group.....	23
TABLE 13: Enhanced Post-Retrofit Analyses for XS Group Across Time.....	26
TABLE 14: Summer Post-Retrofit Analyses for XS Group.....	27
TABLE 15: Enhanced Post-Retrofit Analyses for TS Group Across Time.....	28
TABLE 16: Summer Post-Retrofit Analyses for TS Group.....	29
TABLE 17: Annual Per-Unit Area Application to Turf and Xeriscape.....	30
TABLE 18: Monthly Per-Unit Area Application to Turf and Xeriscape.....	33
TABLE 19: Multivariate Regression Model of Annual Single-Family Residential.....	73
TABLE 20: Multivariate Regression Model of Annual Xeric Study Area Consumption.....	73

## Table of Figures

FIGURE 1: Pre-/Post-Retrofit Consumption for XS and Comparison Groups .....	22
FIGURE 2: Pre-/Post-Retrofit Consumption for XS Group Across Time .....	25
FIGURE 3: Annual Per Unit Area Application to Turf and Xeriscape .....	31
FIGURE 4: Distribution of Annual Per Unit Area Application Data for Turf and Xeriscape .....	32
FIGURE 5: Monthly Per-Unit Area Application for Turf and Xeric Areas .....	34
FIGURE 6: Monthly Per-Unit Area Savings (Turf Area Application– Xeric Area Application) .....	35
FIGURE 7: Monthly Per-Unit Area Application to Turf and Reference.....	36
FIGURE 8: Monthly Per-Unit Area Application to Xeric Areas .....	36
FIGURE 9: Absolute Departure in Irrigation Application from Derived Respective .....	37
FIGURE 10: Relative Departure in Irrigation Application from Derived Respective .....	38
FIGURE 11: Relative Departure in Irrigation Application from Derived Respective .....	39
FIGURE 12: Average Monthly Maintenance Time and Annual Direct Expenditures.....	51
FIGURE 13: Modeled Monthly Water Bill for a Typical Las Vegas Area Home and .....	52
FIGURE 14: Modeled Monthly Water Bill Savings for A Typical Las Vegas Area .....	53
FIGURE 15: Summary of Economics of Typical Single-Family Xeriscape.....	57